

HD Video Surveillance Made Easy.™



MEGApix® 4MP IP Cameras  
with Video Analytics





## 4MP resolution at real-time 30fps with analytics features.

These MEGApix® cameras offer added intelligence features, including; People Counting, Object Removal and Object Added, Line Crossing Detection, People Intrusion, Crowd Density and Exception Detection. All MEGApix® cameras are ONVIF conformant, assuring their successful integration with any open platform solution on the market.



## Video Management Anywhere, Anytime.

- Apps for every operating system. **Cloud enabled.**
- Automated. Intuitive. **Built for Users.**
- **Auto-discover devices** from hundreds of manufacturers.
- Open for developers. **Integrate anything.**



### Features:

**4**

Megapixel



Fixed / Auto Focus Lens



WDR



Analytics



IP66 Rated

**5** YEAR

Warranty

- 4MP 1/3" image sensor at real-time 30fps
- 2.8mm, 3.6mm and 6.0mm fixed lens options\*
- 3.3-12mm motorized zoom auto-focus lens\*
- True Wide Dynamic Range (WDR)
- Multiple codecs (H.265, H.264, MJPEG) with simultaneous dual-stream
- 65'-100' range IR
- People counting and intrusion video analytics
- Object removal video analytics
- Line crossing and intrusion video analytics
- Exception (scene change) video analytic
- Crowd density video analytic
- Smart DNR™ 3D digital noise reduction
- True day/night with mechanical IR cut filter
- Programmable privacy zones
- Auto gain control (AGC)
- Backlight compensation (BLC)
- Auto white balance (AWB)
- Motion detection
- Audio input
- Two-way audio\*
- TF card slot\* (card not included) (DWC-MVT4WiA models)
- Alarm sensor input\* (DWC-MVT4WiA models)
- Relay output\* (DWC-MVT4WiA models)
- Web server built-in
- PoE class 2 and DC12V
- Waterproof cabling
- ONVIF conformant, profile S
- IP66 certified weather and tamper resistant
- IK10-rated impact-resistant\* (vandal dome models only)
- 5 year warranty





### Video Tampering Detection - Video Blur

When a sudden blur or loss in visibility is detected, an alarm will be triggered.



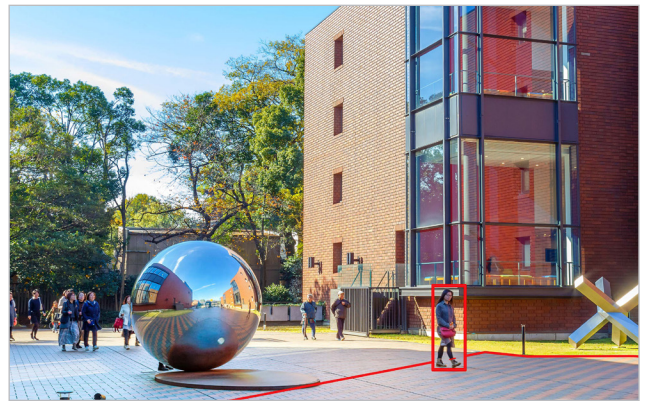
### Video Tampering Detection - Abnormal Color Detection

When the camera's color reproduction is changed, an alarm will be triggered.



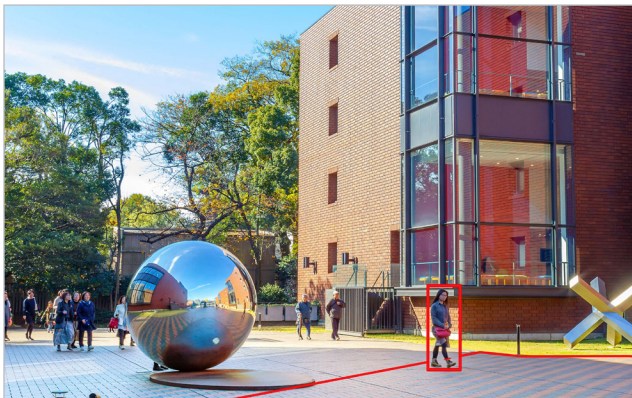
### Perimeter intrusion

Once a pre-defined area is set, any crossing of the lines towards the area, out of the area, or both, will trigger an alarm.



### Perimeter intrusion

Once a pre-defined area is set, any crossing of the lines towards the area, out of the area, or both, will trigger an alarm.



### Line Crossing

Once a pre-defined line is crossed from either direction, an alarm will be triggered.





IMAGE	DWC-MBT4Wi28 DWC-MBT4Wi36	DWC-MTT4Wi28 DWC-MTT4Wi36 DWC-MTT4Wi6	DWC-MTT4WiA	DWC-MVT4Wi28 DWC-MVT4Wi36 DWC-MVT4Wi6	DWC-MVT4WiA
Image sensor	4MP 1/3" CMOS	4MP 1/3" CMOS	4MP 1/3" CMOS	4MP 1/3" CMOS	4MP 1/3" CMOS
<b>LENS</b>					
Focal length	2.8mm, F1.6 (DWC-MBT-4Wi28) 3.6mm, F1.6 (DWC-MBT-4Wi36)	2.8mm, F1.6 (DWC-MTT4Wi28) 3.6mm, F1.6 (DWC-MTT4Wi36) 6.0mm, F1.6 (DWC-MTT4Wi6)	3.3-12mm, F1.4	2.8mm, F1.6 (DWC-MTT4Wi28) 3.6mm, F1.6 (DWC-MTT4Wi36) 6.0mm, F1.6 (DWC-MTT4Wi6)	3.3-12mm, F1.4
Lens type	Fixed lens	Fixed lens	Varifocal remote auto-focus lens	Fixed lens	Varifocal remote auto-focus lens
Field of view (FoV)	103° (DWC-MBT4Wi28) 72° (DWC-MBT4Wi36)	103° (DWC-MTT4Wi28) 72° (DWC-MTT4Wi36) 50° (DWC-MTT4Wi6)	80° - 38°	103° (DWC-MTT4Wi28) 72° (DWC-MTT4Wi36) 50° (DWC-MTT4Wi6)	80° - 38°
IR distance	100' range	65' range	100' range	65' range	100' range
Optical zoom	N/A	N/A	4x optical zoom	N/A	4x optical zoom
<b>I/O</b>					
Audio in / out	1/0	1/0	1/0	1/0	1/1
Alarm in / out	N/A	N/A	N/A	N/A	1/1
<b>OPERATIONAL</b>					
WDR	True WDR	True WDR	True WDR	True WDR	True WDR
WDR dB	120dB	120dB	120dB	120dB	120dB
Privacy zone	4 programmable privacy masks				
Camera analytics	Object removal, exception (scene change, blur/cast detection), line crossing, intrusion, crowd density, people intrusion, people count				
Memory slot	N/A	N/A	N/A	N/A	N/A
<b>ENVIRONMENTAL</b>					
Operating temperature	-4°F - 122°F (-20°C - 50°C)	-4°F - 122°F (-20°C - 50°C)	-4°F - 122°F (-20°C - 50°C)	-4°F - 122°F (-20°C - 50°C)	-4°F - 122°F (-20°C - 50°C)
IP rating	IP66 certified weather and tamper resistant				
IK rating	N/A	N/A	N/A	IK10 rated impact resistant	IK10 rated impact resistant
<b>ACCESSORIES</b>					
	DWC-MBTJUNC - Junction box	DWC-MTTJUNC - Junction box DWC-MTTCMJ - ceiling mount + junction box DWC-MTTWM - wall mount	DWC-MTTJUNC - Junction box DWC-MTTCMJ - ceiling mount + junction box DWC-MTTWM2 - wall mount	DWC-MVTJUNC - Junction box DWC-MVTCMJ - Ceiling mount + junction box DWC-MVTWMJ - Wall mount + junction box	DWC-MVTJUNC2 - Junction box DWC-MVTCMJ2 - Ceiling mount + junction box DWC-MVTWMJ2 - Wall mount + junction box

## Contact us:



### California Office

16220 Bloomfield Avenue  
Cerritos, California USA 90703  
Hours: 8:00am - 5:00pm PST.



### Florida Office

5436 West Crenshaw Street  
Tampa, Florida USA 33634  
Hours: 8:30am - 5:30pm EST.

Phone (Toll-Free)..... 1.866.446.3595

Fax ..... 1.813.888.9262

Customer Service (U.S.)..... 1.866.446.3595

Customer Service (International)..... 1.813.888.9555

Customer Service (French)..... 1.514.360.1309

Sales Email ..... Sales@dwcc.tv

Tech Support Email ..... DW-Tech@dwcc.tv

☎ : 866.446.3595

✉ : sales@dwcc.tv

🌐 : www.digital-watchdog.com

